



2011

# FACT BOOK

*MICRONICS JAPAN CO.,LTD.*

Years ended September 30th 9月30日終了の会計年度

(Millions of yen 百万円)

年度	個別							連結							
	2005	2006	2007	2008	2009	2010	2011	2005	2006	2007	2008	2009	2010	2011	
Net sales	売上高	24,468	30,390	33,102	38,689	17,497	24,385	27,264	24,450	31,064	34,533	41,236	19,301	24,715	29,049
Operating income	営業利益	1,958	4,346	3,766	5,040	△ 4,028	585	287	1,977	4,626	5,658	7,121	△ 3,826	419	928
Ordinary income	経常利益	2,169	4,527	3,797	4,615	△ 4,332	293	361	2,205	4,827	5,482	6,414	△ 4,771	89	921
Net income	当期純利益	1,441	2,853	2,340	3,145	△ 2,562	416	△ 3,230	1,474	3,042	3,016	3,805	△ 3,156	175	△ 2,837
Net income per stock (Yen)	一株当たり当期純利益 (円)	157.11	148.82	117.12	157.48	△ 131.10	21.37	△ 166.26	160.89	158.69	150.96	190.48	△ 161.52	9.03	△ 146.02
Total assets	総資産	25,212	35,744	38,303	39,171	32,422	34,867	32,877	25,427	36,664	41,583	42,808	34,849	36,296	35,563
Total net assets	純資産	11,950	19,776	22,073	23,017	19,323	20,010	16,046	12,059	20,527	23,976	25,615	20,798	20,644	17,232
Equity ratio	自己資本比率 (%)	47.4	55.3	57.2	58.3	59.0	57.2	48.4	47.4	54.9	55.5	57.0	56.6	55.5	46.5
Return on equity	自己資本利益率 (%)	12.7	18.0	11.2	14.1	△ 12.2	2.1	△ 18.0	12.9	18.9	14.0	16.0	△ 14.3	0.9	△ 15.5
Stock price earnings ratio (times)	株価収益率 (倍)	12.4	21.6	23.3	9.2	△ 12.2	32.3	△ 2.9	12.1	20.2	18.1	7.6	△ 9.9	76.5	△ 3.3
Divident payout ratio	配当性向 (%)	22.3	20.2	34.2	28.6	△ 7.6	70.2	△ 6.0	21.8	18.9	26.5	23.6	△ 6.2	166.1	△ 6.8

(注) 1. 記載金額は百万円未満を切り捨てております。

2. 一株当たり当期純利益は当期の期中平均株式数から平均自己株式数を控除した株式数を用いて算出しております。

3. '06年7月1日付をもって1株につき2株の株式分割を実施いたしました。'06年以降の「1株当たり当期純利益」「配当性向」につきましては、当該株式分割を考慮しております。

4. '06年より「貸借対照表の純資産の部の表示に関する会計基準」及び「貸借対照表の純資産の部の表示に関する会計基準等の適用指針」を適用しております。

As of September 30th 9月30日現在

(Millions of yen 百万円)

年度	個別							連結							
	2005	2006	2007	2008	2009	2010	2011	2005	2006	2007	2008	2009	2010	2011	
<b>Assets</b>	<b>資産の部</b>														
<b>Current assets</b>	<b>流動資産</b>														
Cash and deposits	現金及び預金	3,672	5,407	4,126	6,326	3,218	4,304	5,990	3,961	6,081	6,575	7,833	4,761	5,587	8,379
Bills receivable	受取手形	90	222	39	32	4	8	8	8,356	13,539	13,297	12,248	7,693	8,911	10,347
Accounts receivable	売掛金	8,428	13,255	12,812	11,665	7,530	9,885	11,101							
Inventories	たな卸資産	2,602	4,148	3,417	3,545	3,295	2,679	2,207	2,699	4,228	3,955	4,354	3,681	3,073	3,227
Allowance for doubtful accounts	貸倒引当金	△ 77	△ 147	△ 138	△ 368	△ 382	△ 224	△ 56	△ 78	△ 148	△ 155	△ 397	△ 409	△ 265	△ 74
Others	その他	913	1,034	1,155	1,293	1,615	1,276	182	949	1,237	1,189	1,476	1,891	2,430	461
<b>Total current assets</b>	<b>流動資産合計</b>	<b>15,629</b>	<b>23,921</b>	<b>21,413</b>	<b>22,494</b>	<b>15,280</b>	<b>17,929</b>	<b>19,432</b>	<b>15,889</b>	<b>24,938</b>	<b>24,862</b>	<b>25,516</b>	<b>17,617</b>	<b>19,739</b>	<b>22,340</b>
<b>Fixed assets</b>	<b>固定資産</b>														
<b>Tangible fixed assets</b>	<b>有形固定資産</b>							<b>6,693 8,315 12,418 13,873 12,317 11,143 10,001</b>							
Buildings	建物	3,254	3,081	5,405	5,535	5,374	4,939	4,261	3,474	3,297	5,689	5,782	5,980	5,539	4,795
Structures	構築物	116	115	177	145	123	94	68							
Machinery and equipment	機械装置	1,150	2,396	4,101	3,729	2,894	2,301	2,173	1,296	2,523	4,289	4,159	3,192	2,638	2,480
Land	土地	1,436	1,521	1,553	1,733	1,733	1,733	1,733	1,445	1,533	1,565	2,095	2,034	2,009	2,121
Construction in progress	建設仮勘定	146	553	282	768	501	453	151	146	553	332	1,261	643	567	176
Others	その他	309	385	507	516	408	335	385	329	408	541	574	466	387	427
<b>Intangible fixed assets</b>	<b>無形固定資産</b>							<b>785 886 1,048 1,331 1,307 1,158 1,111</b>							
<b>Investment and other assets</b>	<b>投資その他の資産</b>							<b>2,384 2,883 3,835 2,940 4,829 5,941 3,575 2,059 2,524 3,253 2,086 3,607 4,255 2,109</b>							
Investment securities	投資有価証券	1,772	2,362	3,218	1,763	2,147	3,516	3,129	1,534	2,110	2,736	1,242	1,208	2,187	1,800
Allowance for doubtful accounts	貸倒引当金	△ 11	△ 6	△ 6	△ 6	△ 333	△ 266	△ 217	△ 11	△ 6	△ 6	△ 6	△ 367	△ 266	△ 217
Others	その他	623	527	622	1,184	3,015	2,691	663	536	420	523	850	2,766	2,334	526
<b>Total fixed assets</b>	<b>固定資産合計</b>	<b>9,582</b>	<b>11,823</b>	<b>16,889</b>	<b>16,677</b>	<b>17,142</b>	<b>16,937</b>	<b>13,445</b>	<b>9,538</b>	<b>11,725</b>	<b>16,721</b>	<b>17,291</b>	<b>17,231</b>	<b>16,557</b>	<b>13,222</b>
<b>Total assets</b>	<b>資産合計</b>	<b>25,212</b>	<b>35,744</b>	<b>38,303</b>	<b>39,171</b>	<b>32,422</b>	<b>34,867</b>	<b>32,877</b>	<b>25,427</b>	<b>36,664</b>	<b>41,583</b>	<b>42,808</b>	<b>34,849</b>	<b>36,296</b>	<b>35,563</b>

(注) 記載金額は百万円未満を切り捨てております。

As of September 30th 9月30日現在

(Millions of yen 百万円)

年度	個別							連結						
	2005	2006	2007	2008	2009	2010	2011	2005	2006	2007	2008	2009	2010	2011
<b>Liabilities</b>	<b>負債の部</b>													
<b>Current liabilities</b>	<b>流動負債</b>													
Notes payable	3,941	1,679	827	672	397	907	1,023	5,628	7,021	5,601	6,650	2,939	5,709	6,946
Accounts payable	1,688	5,296	4,420	5,800	2,367	4,707	5,812							
Short-term borrowings	1,467	799	1,460	1,436	3,399	1,979	2,350	1,472	805	1,461	1,674	3,795	2,405	3,093
Income taxes payable	759	1,595	327	1,260	209	61	56	759	1,612	861	1,668	270	72	269
Allowance for employees' bonuses	554	762	762	748	414	408	410	559	768	849	835	421	411	432
Others	1,594	3,263	3,624	2,841	1,561	1,618	1,682	1,539	3,337	3,970	2,924	1,800	1,722	1,912
<b>Total current liabilities</b>	<b>10,005</b>	<b>13,396</b>	<b>11,423</b>	<b>12,759</b>	<b>8,351</b>	<b>9,683</b>	<b>11,337</b>	<b>9,958</b>	<b>13,544</b>	<b>12,743</b>	<b>13,754</b>	<b>9,227</b>	<b>10,322</b>	<b>12,655</b>
<b>Fixed liabilities</b>	<b>固定負債</b>													
Long-term borrowings	1,480	681	2,751	1,615	2,959	3,292	3,521	1,507	691	2,753	1,615	3,015	3,432	3,618
Bonds	570	510	450	390	330	270	210	570	510	450	390	330	270	210
Allowance for retirement and severance benefits	693	754	780	806	839	855	1,089	697	762	795	823	859	872	1,101
Allowance for retirement and severance benefits of directors	488	517	550	583	618	-	-	488	517	550	583	618	-	-
Long-term accrued amount payable	24	16	-	-	-	754	194	25	109	312	25	-	754	745
Others	-	91	273	-	-	-	478							
<b>Total fixed liabilities</b>	<b>3,256</b>	<b>2,571</b>	<b>4,806</b>	<b>3,395</b>	<b>4,747</b>	<b>5,172</b>	<b>5,494</b>	<b>3,288</b>	<b>2,592</b>	<b>4,862</b>	<b>3,438</b>	<b>4,823</b>	<b>5,329</b>	<b>5,675</b>
<b>Total liabilities</b>	<b>13,261</b>	<b>15,968</b>	<b>16,229</b>	<b>16,154</b>	<b>13,098</b>	<b>14,856</b>	<b>16,831</b>	<b>13,246</b>	<b>16,136</b>	<b>17,606</b>	<b>17,192</b>	<b>14,050</b>	<b>15,651</b>	<b>18,330</b>
<b>Net assets</b>	<b>純資産の部</b>													
<b>Owner's equity</b>	<b>株主資本</b>													
Common stock	2,555	5,018	5,018	5,018	5,018	5,018	5,018	2,555	5,018	5,018	5,018	5,018	5,018	5,018
Additional paid-in capital	3,306	5,769	5,769	5,769	5,769	5,769	5,769	3,306	5,769	5,769	5,769	5,769	5,769	5,769
Accumulated earnings														
Legal reserve	116	116	116	116	116	116	116							
Unappropriated reserve	3,900	4,900	7,000	8,500	10,300	7,300	7,300	5,720	8,357	10,759	13,765	9,645	9,626	6,497
Unappropriated income for the current year	1,607	3,055	2,681	3,527	△ 1,724	1,496	△ 2,026							
Treasury stock	△ 159	△ 45	△ 17	△ 455	△ 671	△ 671	△ 953	△ 159	△ 45	△ 17	△ 455	△ 671	△ 671	△ 953
<b>Valuation and Translation adjustments</b>	<b>評価・換算差額等</b>													
Unrealized gains on securities	624	950	1,355	350	329	919	686	624	950	1,355	350	329	919	686
Cumulative translations adjustment	-	-	-	-	-	-	-	12	75	178	△ 42	△ 350	△ 513	△ 495
Subscription rights to shares	-	11	148	190	185	61	134	-	11	148	190	185	61	134
<b>Minority interests</b>	<b>少数株主持分</b>													
	-	-	-	-	-	-	-	121	390	762	1,019	871	434	574
<b>Total net assets</b>	<b>11,950</b>	<b>19,776</b>	<b>22,073</b>	<b>23,017</b>	<b>19,323</b>	<b>20,010</b>	<b>16,046</b>	<b>12,180</b>	<b>20,527</b>	<b>23,976</b>	<b>25,615</b>	<b>20,798</b>	<b>20,644</b>	<b>17,232</b>
<b>Total liabilities and net assets</b>	<b>負債及び純資産</b>													
	<b>25,212</b>	<b>35,744</b>	<b>38,303</b>	<b>39,171</b>	<b>32,422</b>	<b>34,867</b>	<b>32,877</b>	<b>25,427</b>	<b>36,664</b>	<b>41,583</b>	<b>42,808</b>	<b>34,849</b>	<b>36,296</b>	<b>35,563</b>

(注) 1. 記載金額は百万円未満を切り捨てております。

2. '06年より「貸借対照表の純資産の部の表示に関する会計基準」及び「貸借対照表の純資産の部の表示に関する会計基準等の適用指針」を適用しております。

Years ended September 30th 9月30日終了の会計年度

(Millions of yen 百万円)

年度	個別							連結							
	2005	2006	2007	2008	2009	2010	2011	2005	2006	2007	2008	2009	2010	2011	
Net sales	売上高	24,468	30,390	33,102	38,689	17,497	24,385	27,264	24,450	31,064	34,533	41,236	19,301	24,715	29,049
Cost of sales	売上原価	16,797	19,920	22,187	24,859	15,053	17,869	20,958	16,731	20,215	21,295	24,731	15,356	17,405	20,938
<b>Gross profit</b>	<b>売上総利益</b>	<b>7,670</b>	<b>10,469</b>	<b>10,915</b>	<b>13,830</b>	<b>2,444</b>	<b>6,516</b>	<b>6,306</b>	<b>7,719</b>	<b>10,848</b>	<b>13,238</b>	<b>16,505</b>	<b>3,945</b>	<b>7,310</b>	<b>8,111</b>
Selling, general and administrative expenses	販売費及び一般管理費	5,712	6,123	7,148	8,790	6,472	5,930	6,018	5,742	6,222	7,579	9,383	7,772	6,890	7,183
<b>Operating income</b>	<b>営業利益</b>	<b>1,958</b>	<b>4,346</b>	<b>3,766</b>	<b>5,040</b>	<b>△ 4,028</b>	<b>585</b>	<b>287</b>	<b>1,977</b>	<b>4,626</b>	<b>5,658</b>	<b>7,121</b>	<b>△ 3,826</b>	<b>419</b>	<b>928</b>
Non-operating income	営業外収益	264	278	500	582	604	127	280	283	300	322	437	134	103	240
Non-operating expenses	営業外費用	52	96	469	1,007	908	419	206	55	99	497	1,144	1,079	433	247
<b>Ordinary income</b>	<b>経常利益</b>	<b>2,169</b>	<b>4,527</b>	<b>3,797</b>	<b>4,615</b>	<b>△ 4,332</b>	<b>293</b>	<b>361</b>	<b>2,205</b>	<b>4,827</b>	<b>5,482</b>	<b>6,414</b>	<b>△ 4,771</b>	<b>89</b>	<b>921</b>
Special profits	特別利益	110	5	11	179	144	404	178	107	5	11	178	174	415	194
Special losses	特別損失	84	26	235	36	83	12	586	84	29	235	38	117	32	404
<b>Net income before income taxes</b>	<b>税引前当期純利益</b>	<b>2,195</b>	<b>4,506</b>	<b>3,572</b>	<b>4,758</b>	<b>△ 4,270</b>	<b>685</b>	<b>△ 46</b>	<b>2,228</b>	<b>4,804</b>	<b>5,258</b>	<b>6,554</b>	<b>△ 4,713</b>	<b>472</b>	<b>711</b>
Corporate, local income and enterprise taxes	法人税、住民税及び事業税	965	1,936	1,208	1,907	56	55	59	965	1,960	1,828	2,645	272	101	291
Deferred income taxes	法人税等調整額	△ 210	△ 283	24	△ 295	△ 1,765	213	3,124	△ 236	△ 263	15	△ 290	△ 1,887	188	3,090
Minority income	少数株主利益	—	—	—	—	—	—	—	26	64	397	394	58	6	167
<b>Net income</b>	<b>当期純利益</b>	<b>1,441</b>	<b>2,853</b>	<b>2,340</b>	<b>3,145</b>	<b>△ 2,562</b>	<b>416</b>	<b>△ 3,230</b>	<b>1,474</b>	<b>3,042</b>	<b>3,016</b>	<b>3,805</b>	<b>△ 3,156</b>	<b>175</b>	<b>△ 2,837</b>

(注) 記載金額は百万円未満を切り捨てております。

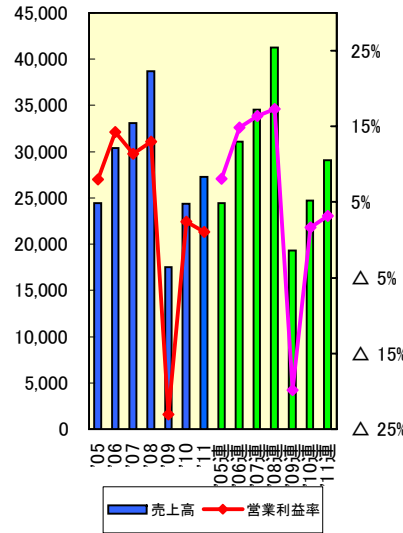
Years ended September 30th 9月30日終了の会計年度

(Millions of yen 百万円)

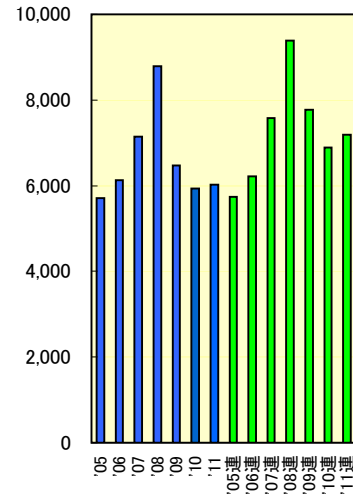
年度	年度	連結						
		2005	2006	2007	2008	2009	2010	2011
<b>Cash flow from operating activities</b>	<b>営業活動によるキャッシュ・フロー</b>							
Net income before income taxes	税引前当期純利益	2,228	4,804	5,258	6,554	△ 4,713	472	711
Depreciation	減価償却費	795	923	1,409	2,249	2,512	2,049	1,979
Operating loss of investment	投資事業組外出資金運用損(△益)	4	△ 15	△ 1	13	27	11	2
Increase/decrease in trade notes and accounts receivable	売上債権の減少額(△増加額)	△ 1,371	△ 5,152	323	883	4,373	△ 1,265	△ 1,447
Increase/decrease in accounts payable	仕入債務の増加額(△減少額)	△ 499	1,359	△ 1,487	1,222	△ 3,604	2,818	1,235
Increase/decrease in inventories	たな卸資産の減少額(△増加額)	1,222	△ 1,519	287	△ 427	640	619	△ 136
Others	その他	539	1,922	401	398	60	△ 822	959
<b>Subtotal</b>	<b>小計</b>	<b>2,921</b>	<b>2,321</b>	<b>6,191</b>	<b>10,894</b>	<b>△ 703</b>	<b>3,883</b>	<b>3,305</b>
Income taxes paid	法人税等の支払額	△ 651	△ 1,128	△ 2,616	△ 1,928	△ 1,861	△ 377	△ 112
Others	その他	279	103	△ 112	△ 515	△ 852	△ 41	△ 15
<b>Net cash provided by operating activities</b>	<b>営業活動によるキャッシュ・フロー</b>	<b>2,548</b>	<b>1,295</b>	<b>3,462</b>	<b>8,451</b>	<b>△ 3,417</b>	<b>3,464</b>	<b>3,176</b>
<b>Cash flow from investing activities</b>	<b>投資活動によるキャッシュ・フロー</b>							
Payment for purchase of property, plant and equipment	有形固定資産取得による支出	△ 1,638	△ 2,254	△ 4,939	△ 4,278	△ 1,360	△ 762	△ 606
Others	その他	△ 657	△ 234	△ 300	△ 566	△ 926	△ 68	15
<b>Net cash used in investing activities</b>	<b>投資活動によるキャッシュ・フロー</b>	<b>△ 2,296</b>	<b>△ 2,489</b>	<b>△ 5,239</b>	<b>△ 4,844</b>	<b>△ 2,286</b>	<b>△ 829</b>	<b>△ 590</b>
<b>Cash flow from financing activities</b>	<b>財務活動によるキャッシュ・フロー</b>							
Proceeds from long-term debt	長期借入れによる収入	2,000	—	3,403	—	3,277	2,691	2,650
Repayment from long-term debt	長期借入金の返済による支出	△ 774	△ 888	△ 966	△ 1,183	△ 1,269	△ 2,179	△ 2,086
Cash dividends	配当金の支払額	△ 175	△ 312	△ 598	△ 799	△ 890	△ 194	△ 292
Acquisition of treasury stocks	自己株式取得による支出	△ 9	△ 30	△ 8	△ 438	△ 215	△ 0	△ 281
Proceeds from issuance of new stock	株式の発行による収入	—	4,895	—	—	—	—	—
Others	その他	1,023	△ 523	353	124	1,419	△ 2,361	128
<b>Net cash provided by financing activities</b>	<b>財務活動によるキャッシュ・フロー</b>	<b>2,063</b>	<b>3,140</b>	<b>2,183</b>	<b>△ 2,297</b>	<b>2,320</b>	<b>△ 2,044</b>	<b>118</b>
Effect of exchange rate changes on cash and cash equivalents	現金及び現金同等物に係る換算差額	16	47	75	△ 96	△ 108	△ 63	11
<b>Net increase/decrease in cash and cash equivalents</b>	<b>現金及び現金同等物の増減額</b>	<b>2,332</b>	<b>1,994</b>	<b>481</b>	<b>1,212</b>	<b>△ 3,492</b>	<b>527</b>	<b>2,716</b>
Cash and cash equivalents of newly consolidated subsidiaries at beginning of years	現金及び現金同等物の期首残高	1,575	3,907	5,901	6,383	7,596	4,104	4,632
<b>Cash and cash equivalents at end of years</b>	<b>現金及び現金同等物の期末残高</b>	<b>3,907</b>	<b>5,901</b>	<b>6,383</b>	<b>7,596</b>	<b>4,104</b>	<b>4,632</b>	<b>7,348</b>

(注) 記載金額は百万円未満を切り捨てております。

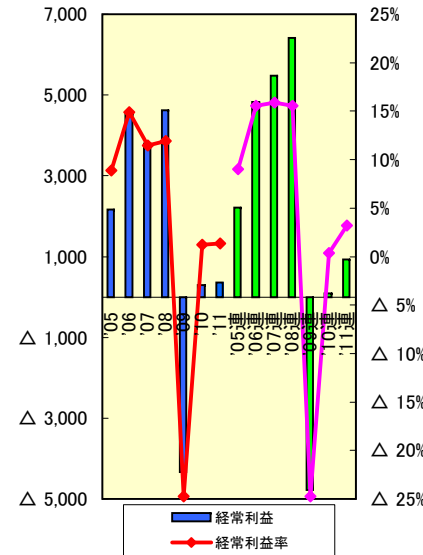
Net sales and operating margin  
売上高及び営業利益率  
(Millions of yen 百万円、%)



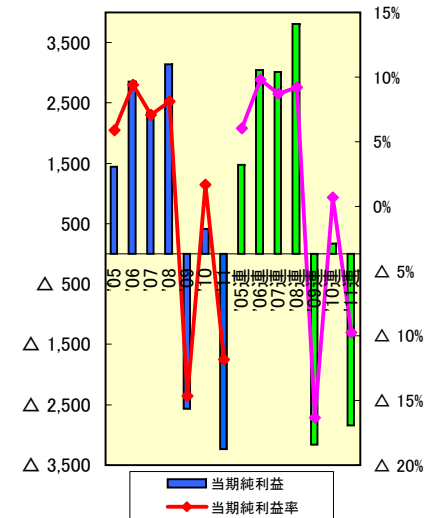
Selling, general and administrative expenses  
販売費及び一般管理費  
(Millions of yen 百万円、%)



Ordinary income and ordinary profit margin  
経常利益及び経常利益率  
(Millions of yen 百万円、%)



Net income and Return on sale  
当期純利益及び当期純利益率  
(Millions of yen 百万円、%)



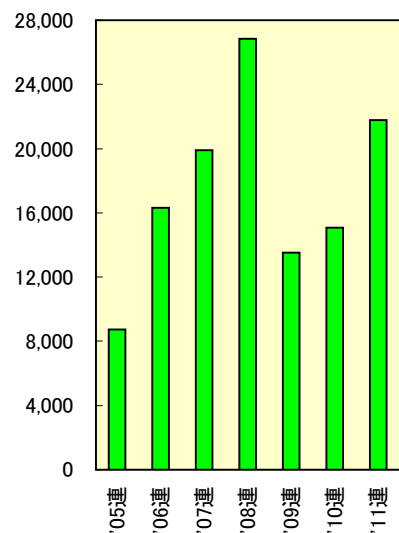
Fiscal year	Net sales	Operating margin
年度	売上高	営業利益率
(単体) 2005	24,468	8.0%
2006	30,390	14.3%
2007	33,102	11.4%
2008	38,689	13.0%
2009	17,497	△ 23.0%
2010	24,385	2.4%
2011	27,264	1.1%
(連結) 2005	24,450	8.1%
2006	31,064	14.9%
2007	34,533	16.4%
2008	41,236	17.3%
2009	19,301	△ 19.8%
2010	24,715	1.7%
2011	29,049	3.2%

Fiscal year	Selling, general and administrative expenses
年度	販売費及び一般管理費
(単体) 2005	5,712
2006	6,123
2007	7,148
2008	8,790
2009	6,472
2010	5,930
2011	6,018
(連結) 2005	5,742
2006	6,222
2007	7,579
2008	9,383
2009	7,772
2010	6,890
2011	7,183

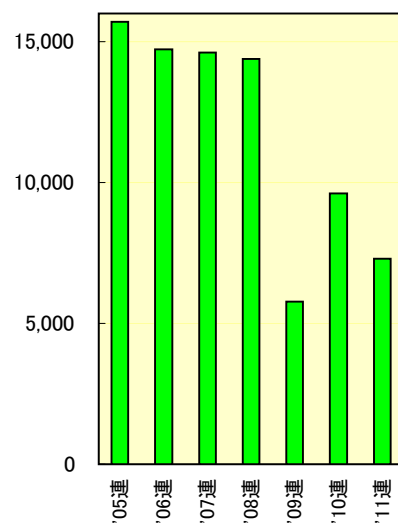
Fiscal year	Ordinary income	Ordinary profit margin
年度	経常利益	経常利益率
(単体) 2005	2,169	8.9%
2006	4,527	14.9%
2007	3,797	11.5%
2008	4,615	11.9%
2009	△ 4,332	△ 24.8%
2010	293	1.2%
2011	361	1.3%
(連結) 2005	2,205	9.0%
2006	4,827	15.5%
2007	5,482	15.9%
2008	6,414	15.6%
2009	△ 4,771	△ 24.7%
2010	89	0.4%
2011	921	3.2%

Fiscal year	Net income	Return on sale
年度	当期純利益	当期純利益率
(単体) 2005	1,441	5.9%
2006	2,853	9.4%
2007	2,340	7.1%
2008	3,145	8.1%
2009	△ 2,562	△ 14.6%
2010	416	1.7%
2011	△ 3,230	△ 11.8%
(連結) 2005	1,474	6.0%
2006	3,042	9.8%
2007	3,016	8.7%
2008	3,805	9.2%
2009	△ 3,156	△ 16.4%
2010	175	0.7%
2011	△ 2,837	△ 9.8%

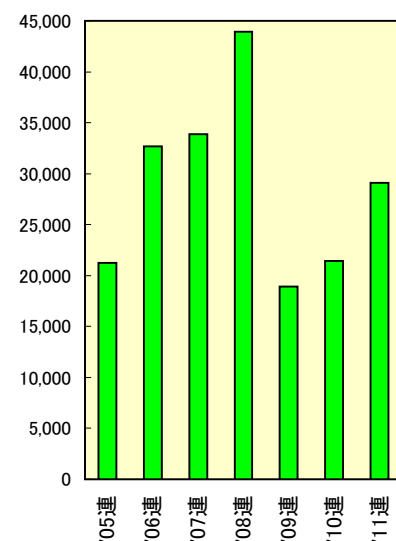
Net sales  
(Semiconductor measuring units)  
**半導体機器事業 売上高**  
(Millions of yen 百万円)



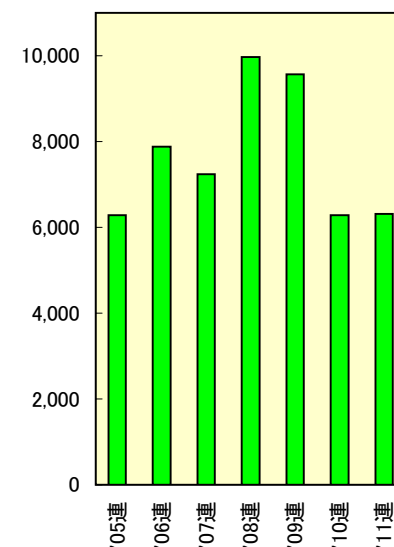
Net sales  
(Testing equipments)  
**FPD機器事業 売上高**  
(Millions of yen 百万円)



Order  
**受注高**  
(Millions of yen 百万円)



Order backlog  
**受注残**  
(Millions of yen 百万円)



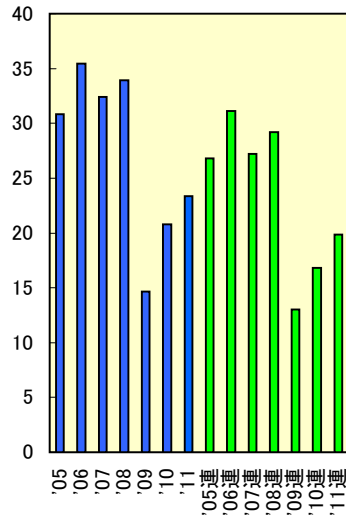
Fiscal year	Net sales
年度	半導体機器事業 売上高
(連結) 2005	8,751
2006	16,326
2007	19,914
2008	26,850
2009	13,523
2010	15,093
2011	21,760

Fiscal year	Net sales
年度	FPD機器事業 売上高
(連結) 2005	15,699
2006	14,738
2007	14,619
2008	14,385
2009	5,778
2010	9,622
2011	7,288

Fiscal year	Order
年度	受注高
(連結) 2005	21,251
2006	32,659
2007	33,897
2008	43,962
2009	18,896
2010	21,426
2011	29,088

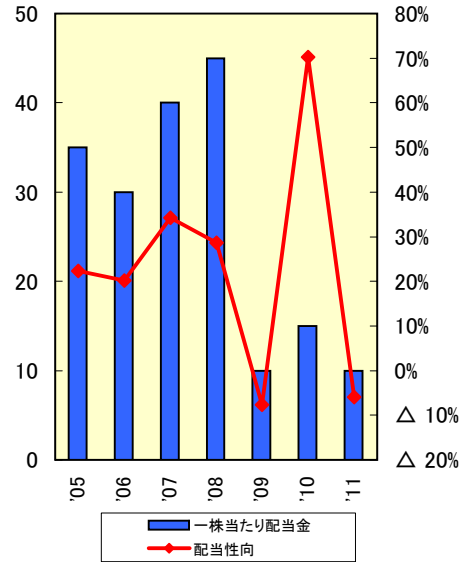
Fiscal year	Order backlog
年度	受注残
(連結) 2005	6,287
2006	7,882
2007	7,246
2008	9,972
2009	9,567
2010	6,278
2011	6,316

Net sales per employees  
一人当たり売上高  
(Millions of yen 百万円)



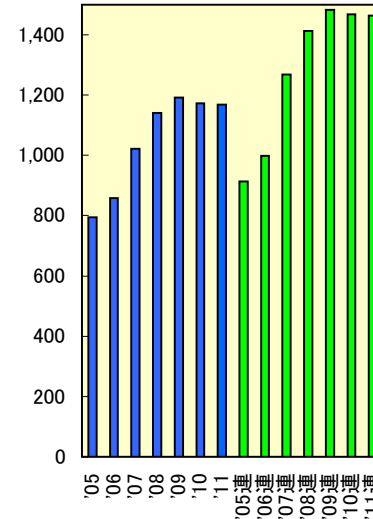
Fiscal year	Net sales per employees
年度	一人当たり売上高
(単体) 2005	30.8
2006	35.4
2007	32.4
2008	33.9
2009	14.7
2010	20.8
2011	23.3
(連結) 2005	26.8
2006	31.1
2007	27.2
2008	29.2
2009	13.0
2010	16.8
2011	19.8

Cash dividends per stock and dividend payout ratio  
一株当たり配当金と配当性向  
(Yen 円、%)



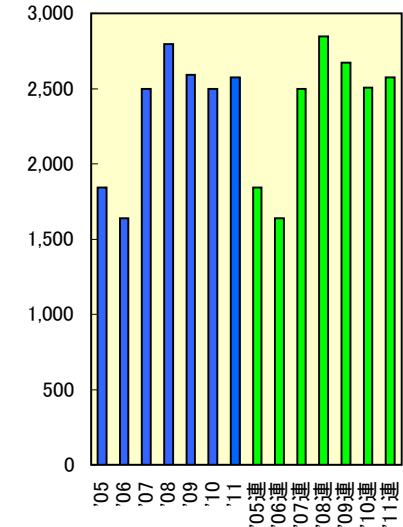
Fiscal year	Cash dividends per stock	Dividend payout ratio
年度	一株当たり配当金	配当性向
(単体) 2005	35.00	22.3%
2006	30.00	20.2%
2007	40.00	34.2%
2008	45.00	28.6%
2009	10.00	△ 7.6%
2010	15.00	70.2%
2011	10.00	△ 6.0%

Number of employees  
従業員数  
(People 人)



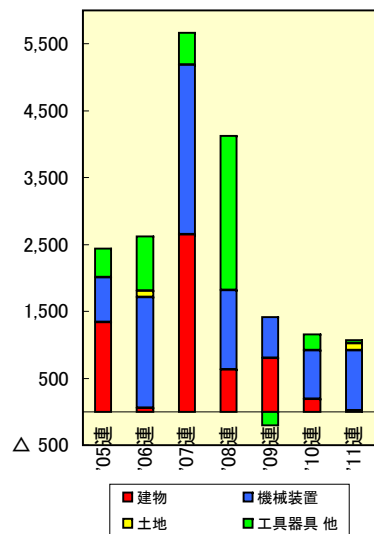
Fiscal year	Number of employees
年度	従業員数
(単体) 2005	794
2006	858
2007	1,021
2008	1,140
2009	1,192
2010	1,172
2011	1,168
(連結) 2005	913
2006	999
2007	1,269
2008	1,412
2009	1,483
2010	1,468
2011	1,464

R&D expenses  
研究開発費  
(Millions of yen 百万円)



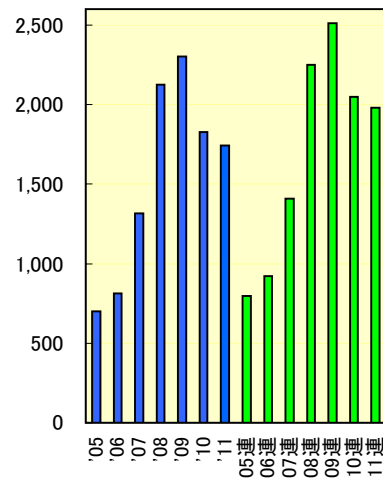
Fiscal year	R&D expenses
年度	研究開発費
(単体) 2005	1,842
2006	1,640
2007	2,500
2008	2,797
2009	2,593
2010	2,498
2011	2,576
(連結) 2005	1,842
2006	1,640
2007	2,500
2008	2,847
2009	2,672
2010	2,506
2011	2,576

Investment in plant and equipment  
設備投資額  
(Millions of yen 百万円)



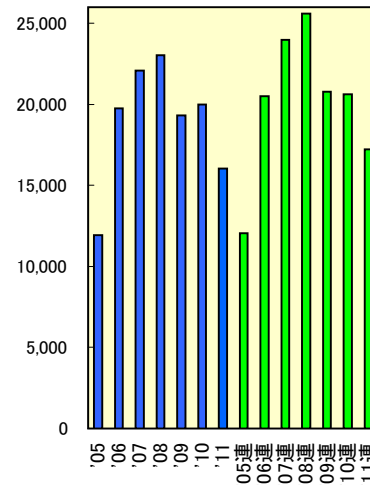
Fiscal year	Investment in plant and equipment
年度	設備投資額
(連結) 2005	2,437
2006	2,618
2007	5,663
2008	4,120
2009	1,202
2010	1,156
2011	1,070

Depreciation expense  
減価償却費  
(Millions of yen 百万円)



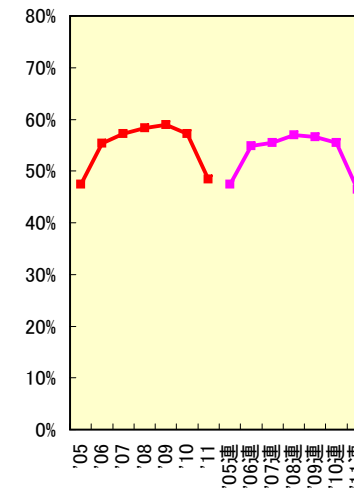
Fiscal year	Depreciation expense
年度	減価償却費
(単体) 2005	702
2006	811
2007	1,315
2008	2,125
2009	2,304
2010	1,827
2011	1,741
(連結) 2005	795
2006	923
2007	1,409
2008	2,249
2009	2,512
2010	2,049
2011	1,979

Total net assets  
純資産  
(Millions of yen 百万円)



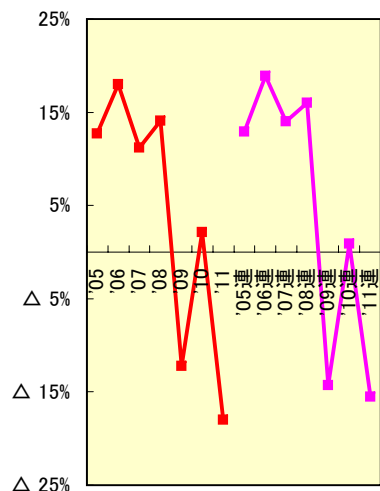
Fiscal year	Total net assets
年度	純資産
(単体) 2005	11,950
2006	19,776
2007	22,073
2008	23,017
2009	19,323
2010	20,010
2011	16,046
(連結) 2005	12,059
2006	20,527
2007	23,976
2008	25,615
2009	20,798
2010	20,644
2011	17,232

Equity ratio  
自己資本比率  
(%)

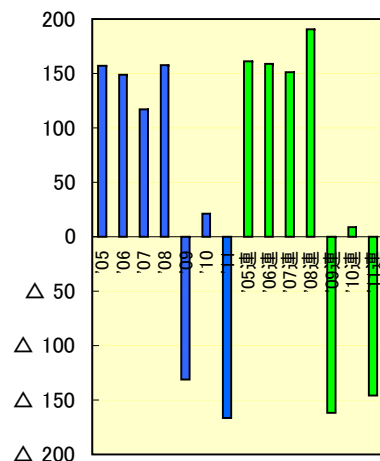


Fiscal year	Equity ratio
年度	自己資本比率
(単体) 2005	47.4%
2006	55.3%
2007	57.2%
2008	58.3%
2009	59.0%
2010	57.2%
2011	48.4%
(連結) 2005	47.4%
2006	54.9%
2007	55.5%
2008	57.0%
2009	56.6%
2010	55.5%
2011	46.5%

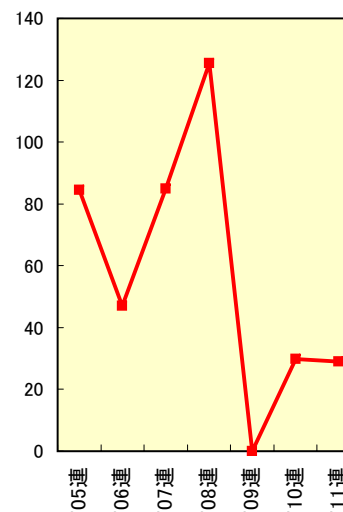
Return on equity  
自己資本利益率  
(%)



Net income per stock  
一株当たり当期純利益  
(Yen 円)



Interest coverage ratio  
インタレスト・カバレッジ・レシオ  
(times 倍)



Fiscal year	Return on equity
年度	自己資本利益率
(単体) 2005	12.7%
2006	18.0%
2007	11.2%
2008	14.1%
2009	△ 12.2%
2010	2.1%
2011	△ 18.0%
(連結) 2005	12.9%
2006	18.9%
2007	14.0%
2008	16.0%
2009	△ 14.3%
2010	0.9%
2011	△ 15.5%

Fiscal year	Net income per stock
年度	一株当たり当期純利益
(単体) 2005	157.11
2006	148.82
2007	117.12
2008	157.48
2009	△ 131.10
2010	21.37
2011	△ 166.26
(連結) 2005	160.89
2006	158.69
2007	150.96
2008	190.48
2009	△ 161.52
2010	9.03
2011	△ 146.02

Fiscal year	Interest coverage ratio
年度	インタレスト・カバレッジ・レシオ
(連結) 2005	84.6
2006	47.1
2007	84.9
2008	125.4
2009	—
2010	29.8
2011	28.9